



Photo Editing Software For SL620

User Manual Version 3.5*

For DNP printers
and HID Fargo DTC 1250e ONLY

**This Manual is about the new features included in the 3.5.55.22 software Update. The SL+ version 3.5.55.33 software update includes major bug fixes and improvements.*

March 2022
Version 1.0

SUMMARY

SUMMARY	2
1. LICENSE AGREEMENTS, TERMS & CONDITIONS	3
2. NEW FEATURES	4
3. PAYMENT METHODS	5
4. IDENTITY	8
Manual modifications.....	8
6. STATISTICS.....	9
7. TROUBLESHOOTING	10
DNP PIE Support team contact details	10
Local immediate print product is no longer available.....	10
User manual	10

1. LICENSE AGREEMENTS, TERMS & CONDITIONS

Please refer the original user manual of Snap Lab Plus v1.8 for the following items:

- Snaplab+ Software Licensing Agreement
- Ownership Retained By Licensor
- Disclaimer of Warranties
- Limitation of Liability
- Governing Law
- Terms & Conditions
- Acknowledgments
- ICC Profiles

2. NEW FEATURES

The new Snaplab+ version 3.5 includes these new features/improvements:

- Payment methods: selection of the payment on user side (by credit card or at the cash desk)
- ID: biometric report improved with manual modifications icons
- Statistics: automatic backup with timing selection

3. PAYMENT METHODS

From this new version, it is now possible to offer 2 payment modes to your customers: by credit card or at the cash desk.

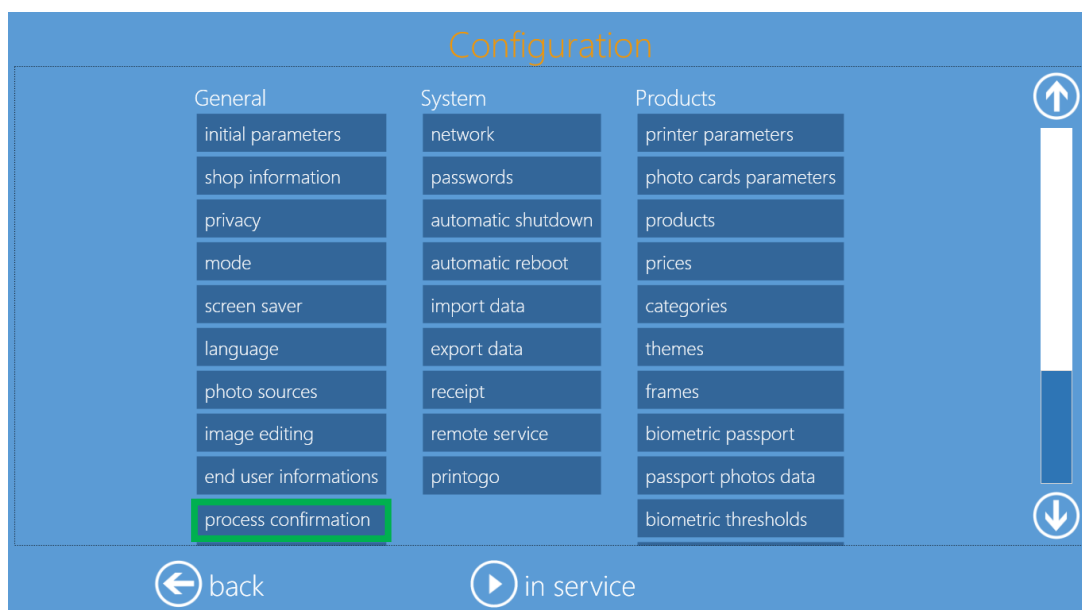
Payment by credit card is only possible through SumUp. The order is printed once the transaction has been validated.

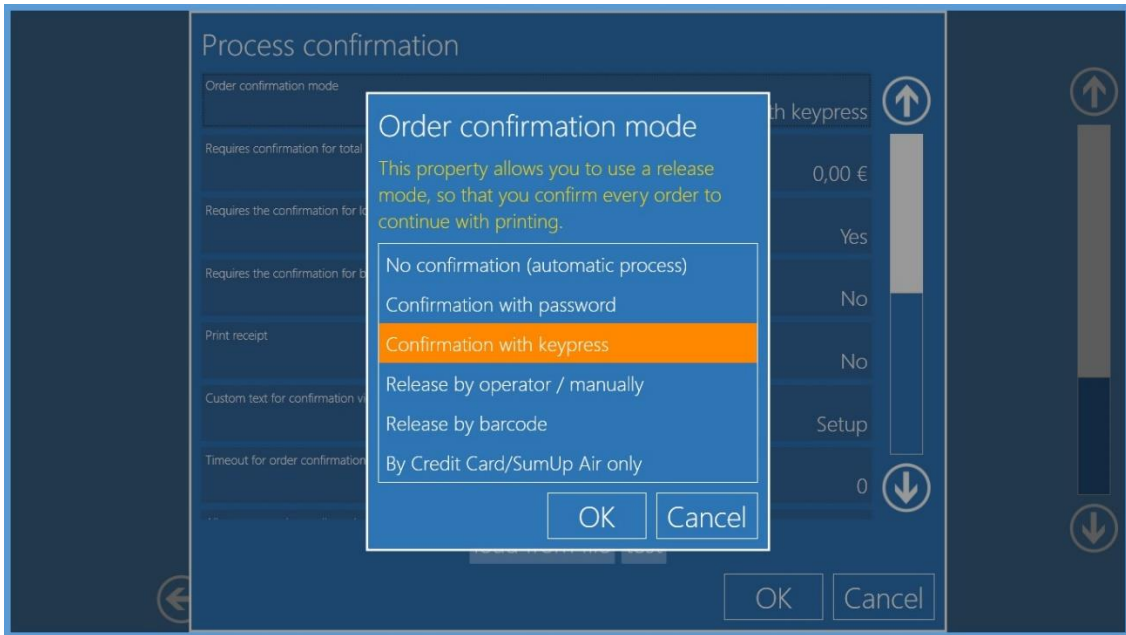
For payment at the counter, the terminal prints the receipt for the customer. The customer goes to the counter to pay for his order with his receipt. The operator gives him a new ticket with a barcode. The customer then returns to the order terminal, scans the barcode and gets his or her photos.

- 1) From the main menu, press on *Settings* button

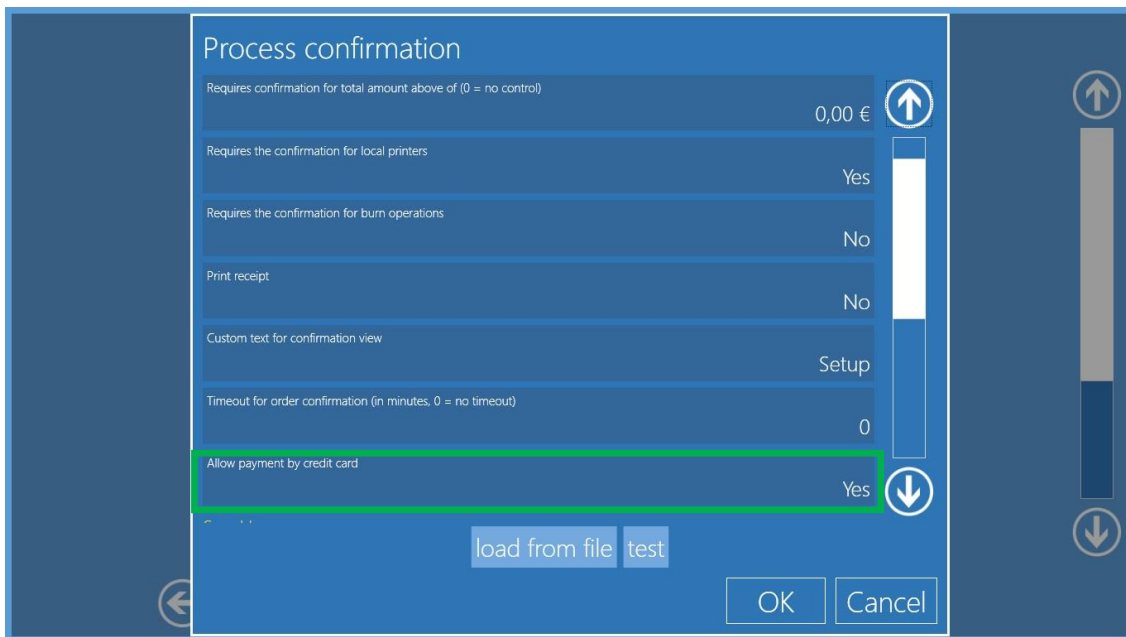


- 2) In the General column, press the *Process Confirmation* button. Choose the desired order confirmation mode. You can add card payment (in addition to counter payment) for the following 4 modes: confirmation with password, confirmation by numeric keypad, manual triggering by operator, barcode print triggering.





- 3) Once the order confirmation mode is selected, enable payment by credit card with the *Allow payment by credit card* button by selecting Yes. You can also define some SumUp settings.



Process confirmation

Yes

SumUp

Client Id
frvrVol6Be2zTOh2pG_QNJKz11t

Client Secret
23d0816f4a0d28ce8f5dbefbcac89ca0185bfcb676c5357c5ea57076faf786e4

User name
dnpphoto@sumup.fr

Password
#####

VAT Rate
20,00 %

Minimum amount
1,00 €

Maximum amount (0 = no limit)
0,00 €

Message to display in case of payment error

Setup

load from file test

OK Cancel

- 4) User/customer workflow: after validation of the order, a new screen appears offering 2 payment options.

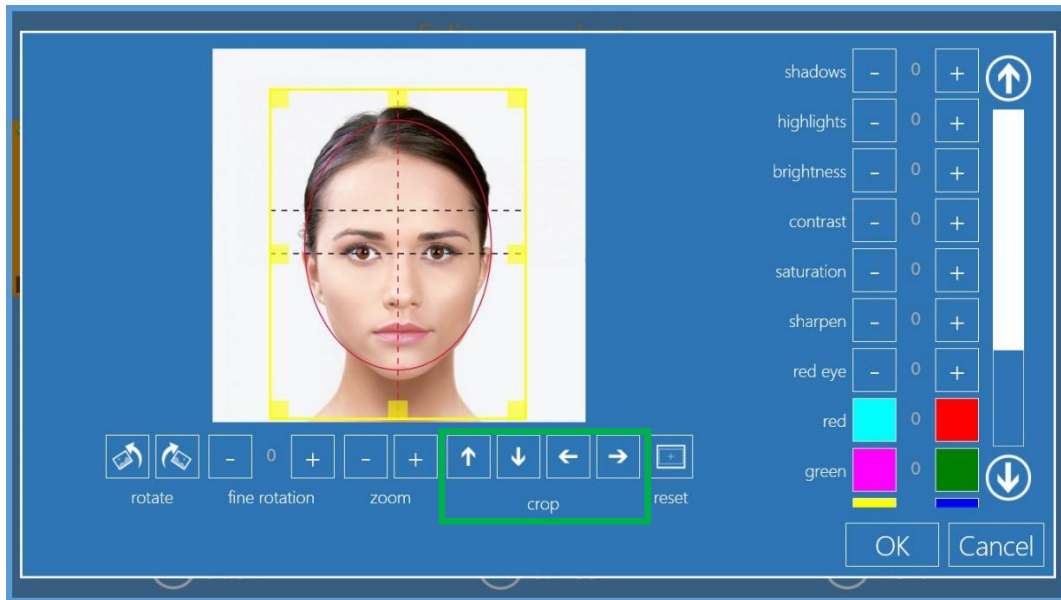
Please select your favorite payment method

credit card pay to the operator

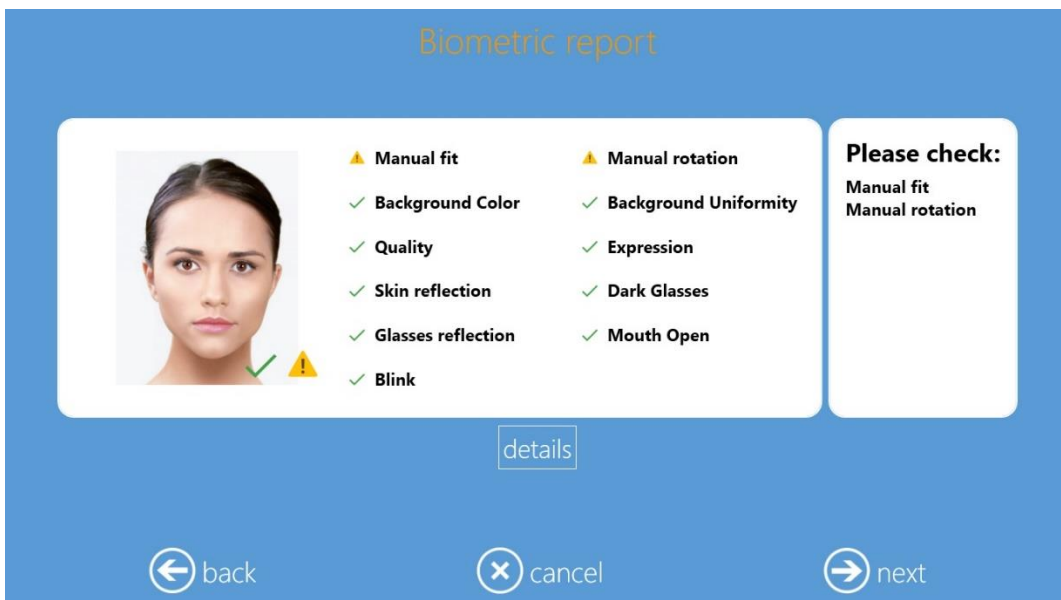
cancel

4. IDENTITY

Manual modifications



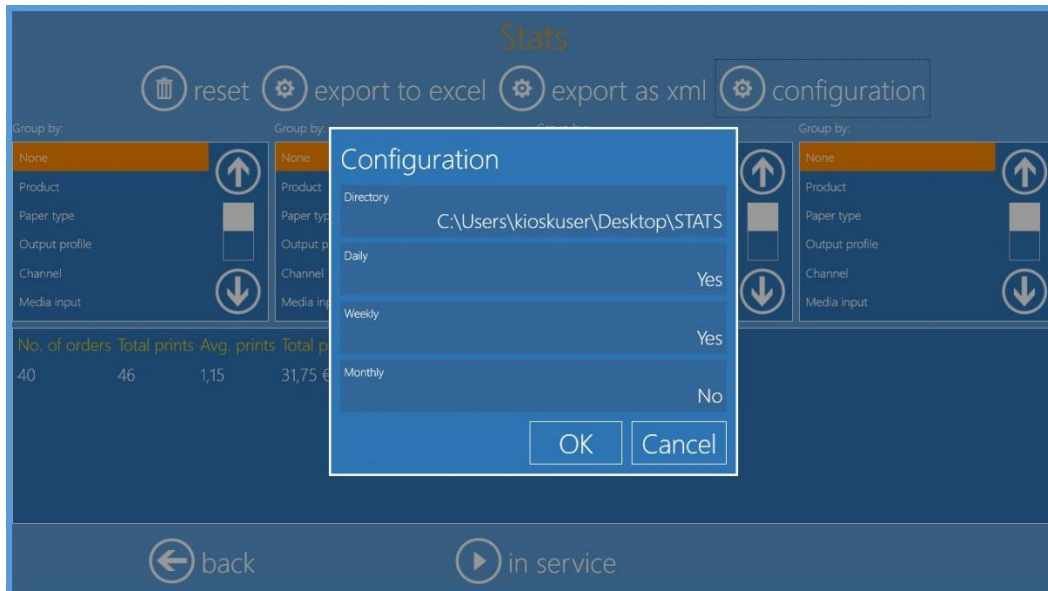
Note: If you make modifications on rotation or cropping (for example), SL+ software will analyse your changes according to current biometric criteria and will display a custom biometric report. By default, software incorporates a margin of tolerance for changes.



Important: For any manual modification, the software displays a "warning sign" icon in the biometric report (in the example, this is the manual cropping and manual rotation). This icon means that the manual modification made is within the modification tolerance. If your changes are outside the change tolerance zone, you will see a red cross on the biometric report. This means that your photo does not meet the biometric standards.

6. STATISTICS

You can now define the frequency of your automatic statistics export. To do this, click on the *configuration* button (in the statistics menu), select the source folder and the desired frequency of saving.



7. TROUBLESHOOTING

DNP PIE Support team contact details

For any technical issue(s) and/or question(s), please contact DNP PIE support team at:

support@dnpphoto.eu

Local immediate print product is no longer available

If you are using DNP printers, the software automatically hides the products which cannot be processed. Make sure the printer is powered on, with available media, connected to the Terminal and ready to print.

User manual

This Manual is only about the 3.5 Update, for the full version please refer to DNP website/Downloads/Manuals:
<http://dnpphoto.eu/en/support-and-downloads/manuals-brochures/manuals/dp-sl620-2/85-sl620-user-manuals>